



Ashby Road, Loughborough, LE12 9TJ



Part of  
**SHELDON  
BOSLEY  
KNIGHT**  
LAND AND  
PROPERTY  
PROFESSIONALS



# Property Description

\*\*\*AVAILABLE NOW\*\*\*

An opportunity has arisen to rent a recently refurbished 4-bedroomed, semi-detached house located in Belton. The accommodation comprises of entrance hall, lounge, fitted dining kitchen. To the first floor are two good sized bedrooms, one with ensuite and a family bathroom. To the second floor are a further two bedroom and family bathroom with separate bath and shower. Outside offers extensive front garden area. The property benefits from gas fired central heating and UPVC double glazed windows.

The property is offered unfurnished.

Council Tax Band: D.

Energy Rating: C.

Initial 6 Month Tenancy.







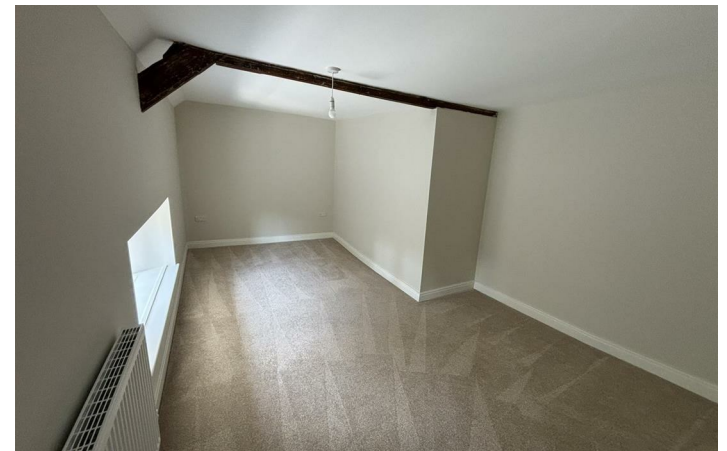
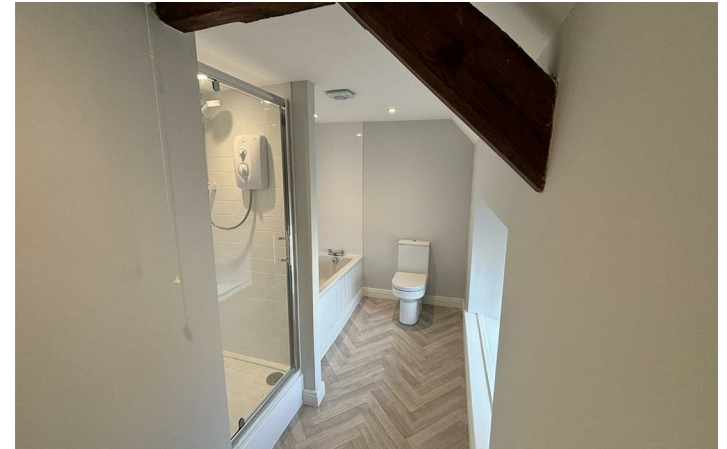
## Key Features

- AVAILABLE NOW
- 4 Bedrooms
- Semi-Detached
- EPC Rating: C
- Belton
- Council Tax Band: D
- Initial 6 month tenancy

**PCM**  
**£1,350 PCM**







EPC Rating - C

Tenure -

Council Tax Band -

Local Authority

We routinely refer clients to both our recommended Legal Firm and a panel of Financial Services Providers. It is your decision whether you choose to deal with these companies. In making that decision, you should know that we receive a referral fee





To view this property please contact our Loughborough office on 01509 235534



Part of  
**SHELDON  
BOSLEY  
KNIGHT**  
LAND AND  
PROPERTY  
PROFESSIONALS